

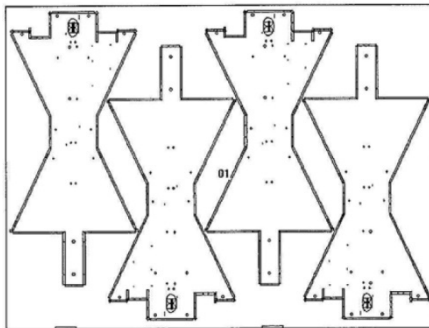


Case Study: Material Cost Savings through Part Redesign and Nesting

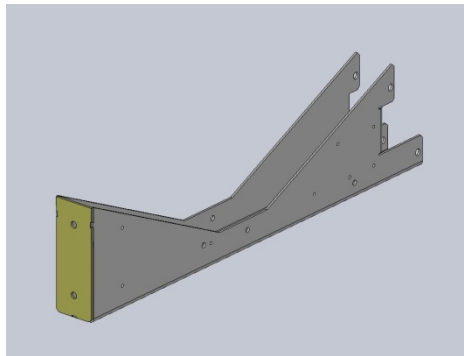
The Challenge: This part is a higher volume weldment . . . heavier gage material (8 GA G-90) and robotically welded. While already aggressively priced, the customer must have a cost reduction.

The Solution: By changing the design of the part, Metcam's CAD department was able to re-nest it and dramatically improve the utilization of a heavy gage material.

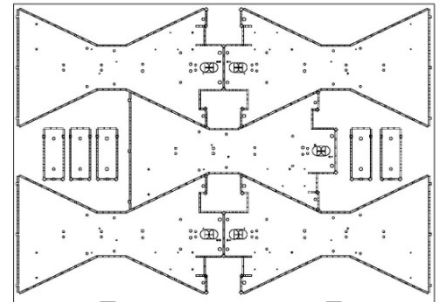
Original Nest



Revised Part Design
(end panel as separate component)



Revised Nest



The Results: The cost of manufacturing the part decreased by about \$50,000 per year. In addition, the part quality improved due to the design of the plate and the related welding process. There is now no weld splatter inside part and the design ensures consistency of the part's opening.